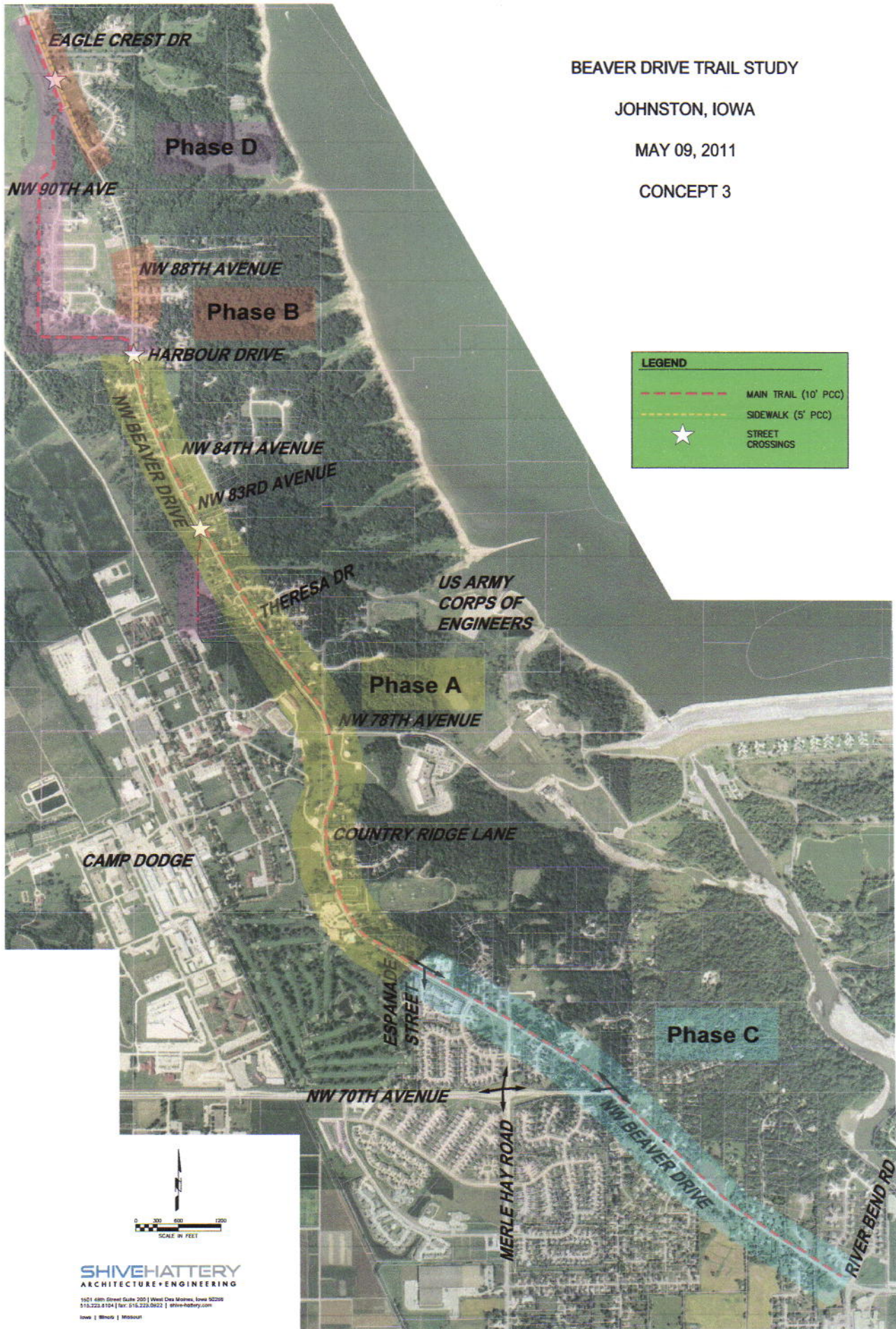


BEAVER DRIVE TRAIL STUDY

JOHNSTON, IOWA

MAY 09, 2011

CONCEPT 3



LEGEND

- MAIN TRAIL (10' PCC)
- SIDEWALK (5' PCC)
- ★ STREET CROSSINGS

SHIVEHATTERY

ARCHITECTURE+ENGINEERING

Beaver Drive Trail Study
CONCEPTUAL COST OPINION
 5/13/2011

ITEM	DESCRIPTION	UNIT	QUANTITY	UNIT COST	EXTENDED COST
Phase A					
1	Mobilization / Traffic Control	LS	1	\$20,000	\$20,000
2	Excavation	CY	3850	\$10	\$38,500
3	6" PCC Trail (10')	SY	11450	\$40	\$458,000
4	5" PCC Sidewalk (5')	SY	0	\$35	\$0
5	Driveway/Intersection Culvert Extensions & Grading	EA	33	\$2,750	\$90,750
6	Intersection Signage / Pavement Markings	EA	10	\$1,000	\$10,000
7	Erosion Control / Topsoil / Seeding	LS	1	\$30,000	\$30,000
	Subtotal				\$647,250
	20% Contingency				\$129,450
	Engineering / Construction Admin / Staking (15%)				\$97,088
	PHASE A ANTICIPATED COST				\$873,788
Phase B					
1	Mobilization / Traffic Control	LS	1	\$7,500	\$7,500
2	Excavation	CY	1250	\$10	\$12,500
3	6" PCC Trail (10')	SY	0	\$40	\$0
4	5" PCC Sidewalk (5')	SY	1925	\$35	\$67,375
5	Driveway/Intersection Culvert Extensions & Grading	EA	8	\$2,750	\$22,000
6	Intersection Signage / Pavement Markings	EA	5	\$1,000	\$5,000
7	Erosion Control / Topsoil / Seeding	LS	1	\$10,000	\$10,000
	Subtotal				\$124,375
	20% Contingency				\$24,875
	Engineering / Construction Admin / Staking (15%)				\$18,656
	PHASE B ANTICIPATED COST				\$167,906
Phase C					
1	Mobilization / Traffic Control	LS	1	\$15,000	\$15,000
2	Excavation	CY	2850	\$10	\$28,500
3	6" PCC Trail (10')	SY	8525	\$40	\$341,000
4	5" PCC Sidewalk (5')	SY	0	\$35	\$0
5	Driveway/Intersection Culvert Extensions & Grading	EA	25	\$2,750	\$68,750
6	Intersection Signage / Pavement Markings	EA	8	\$1,000	\$8,000
7	Erosion Control / Topsoil / Seeding	LS	1	\$25,000	\$25,000
	Subtotal				\$486,250
	20% Contingency				\$97,250
	Engineering / Construction Admin / Staking (15%)				\$72,938
	PHASE C ANTICIPATED COST				\$656,438
Phase D					
1	Mobilization / Traffic Control	LS	1	\$12,500	\$12,500
2	Excavation	CY	2450	\$10	\$24,500
3	6" PCC Trail (10')	SY	7350	\$40	\$294,000
4	5" PCC Sidewalk (5')	SY	0	\$35	\$0
5	Driveway/Intersection Culvert Extensions & Grading	EA	2	\$2,750	\$5,500
6	Intersection Signage / Pavement Markings	EA	2	\$1,000	\$2,000
7	Fencing (Camp Dodge Easement)	LF	7000	\$20	\$140,000
8	Erosion Control / Topsoil / Seeding	LS	1	\$20,000	\$20,000
	Subtotal				\$498,500
	20% Contingency				\$99,700
	Engineering / Construction Admin / Staking (15%)				\$74,775
	PHASE D ANTICIPATED COST				\$672,975
	TOTAL ANTICIPATED COST				\$2,371,106